

*Future Trail Connections to Gaston College, Gaston County Park and Technology Park*

# Proposed Trails to Rankin Lake Park

## Highland Branch Trail & Long Creek Trail

Future Rankin Lake Park Trail System including trail around lake

**Areas needing design services**

Proposed Long Creek Trail

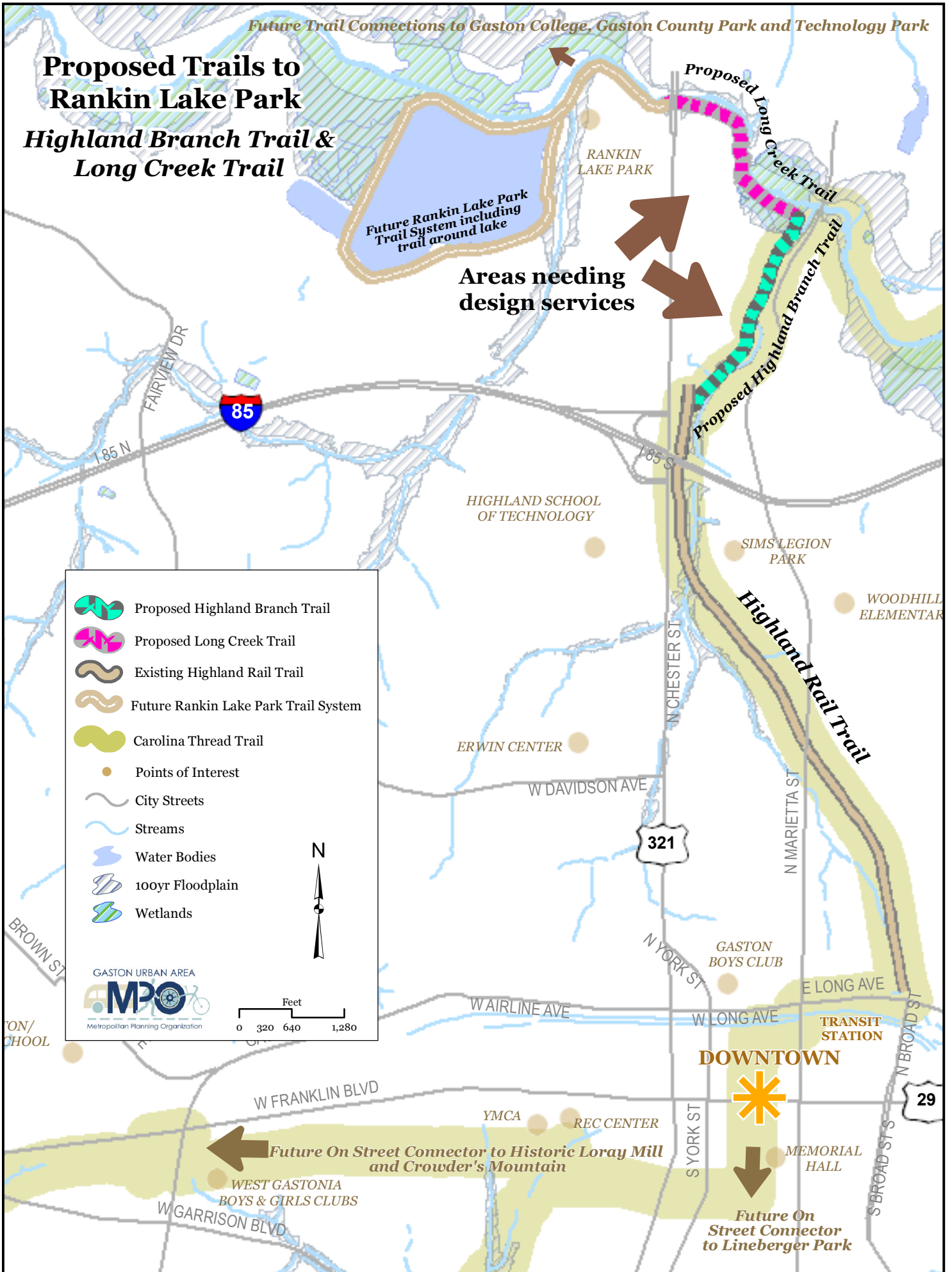
Proposed Highland Branch Trail

Highland Rail Trail

- Proposed Highland Branch Trail
- Proposed Long Creek Trail
- Existing Highland Rail Trail
- Future Rankin Lake Park Trail System
- Carolina Thread Trail
- Points of Interest
- City Streets
- Streams
- Water Bodies
- 100yr Floodplain
- Wetlands

GASTON URBAN AREA  
**MPO**  
Metropolitan Planning Organization

Feet  
0 320 640 1,280



**Future On Street Connector to Historic Loray Mill and Crowder's Mountain**

**Future On Street Connector to Lineberger Park**

**DOWNTOWN**

